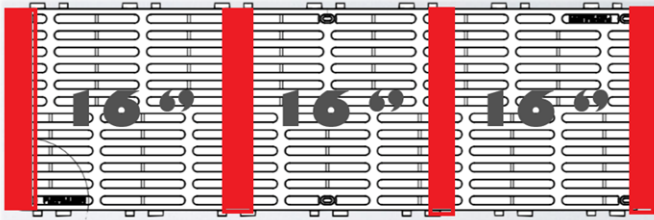
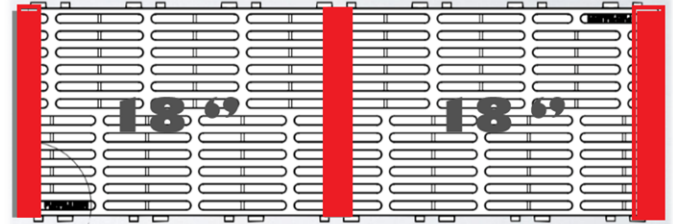


## INSTALLATION GUIDELINES

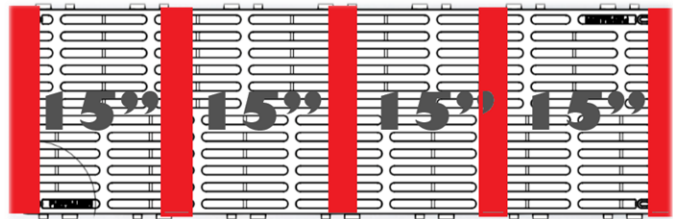
- 1. Sub-Structure** -Proper installation of the Sunwalk™ panels starts with the substructure. Consult your local builder or engineer to ensure your substructure will comply with your local codes and provide the support and spacing to accept the Sunwalk™ panels.



1'x4', 2'x4' and 4'x4' panels require 16" on centre support



1'x3' and 3'x4' panels require 18" on centre support



1'x5' and 4'x5' panels require 15" on centre support

- 2. Fastening** - Lay your first Sunwalk™ panel on the substructure, ensuring you have the panel flat and square. Once panel is square to the substructure, fasten the Sunwalk™ panel using the pre-drilled mounting locations with #10 or #12 pan head fasteners.
  1. Wood fasteners - #10 or #12-2.5" pan head wood screws (SS is recommended)
  2. Metal fasteners - #10 or #12 – 1.5" pan head self-drilling/tapping (SS is recommended, length may vary to metal thickness)

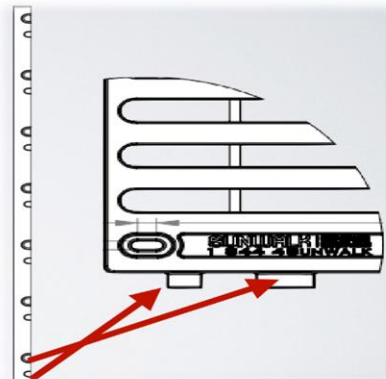


METAL SCREW

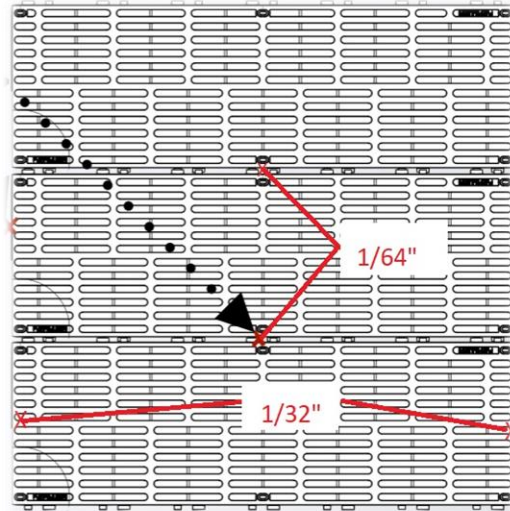


Wood Screw

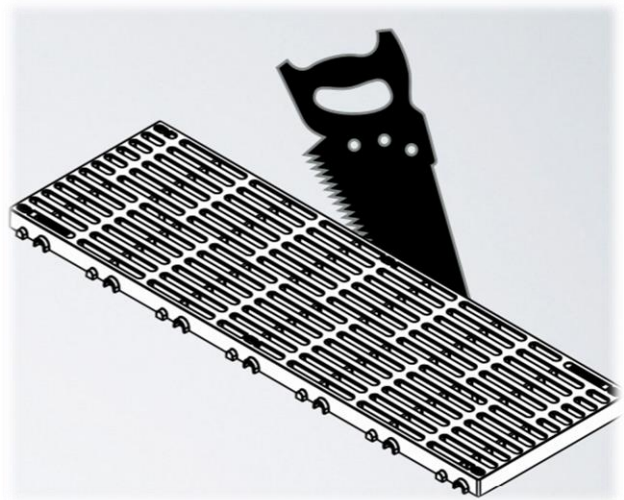
- 3. Alignment** - Using the alignment tabs on the panels, lay additional panels out making sure the panels stay square to the sub-structure. (You can lay 8-10 panels out and then go back and fasten to ensure proper alignment and squareness to sub-structure) Repeat steps for further panels.



4. **Spacing** – Sunwalk™ panels are engineered not shrink or swell due to changes in moisture, however changes in temperature will cause slight expansion and contractions. We do recommend that 1/32" gapping is used on the long side of the panel (3', 4' and 5' lengths) and 1/64" is used for the 1' side of the panels, for every 30oF of difference between installation temperature and the hottest temperature expected. In cold climate regions, gapping due to contraction will occur in the exact reverse.



5. **Cutting** - Sunwalk™ panels maybe required to fit your application, in this case you can cut the Sunwalk™ panel with a regular wood blade saw. Once panel is cut you will need to support the panel under the cut edges to provide proper support.



## Quick Tips

- **Codes and Standards** – Always conform and or consult your local building codes to ensure you follow proper building guidelines
- **Safety** – Always use proper PPE (Personal Protective Equipment)
- **Fastening** – Do not overtighten the fasteners, all you want to do is trap the panel in place, this allows for any expansion and contraction.

For more information on how to install your new Sunwalk™ decking panels please visit our website [www.sunwalkdocks.com](http://www.sunwalkdocks.com) or

Call Toll Free: 1-884-478-6925